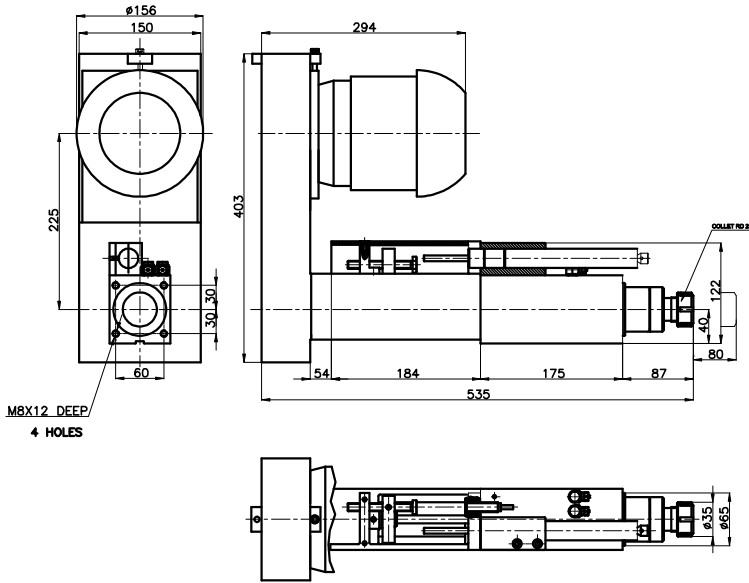




PRECITEC MODULAR UNITS

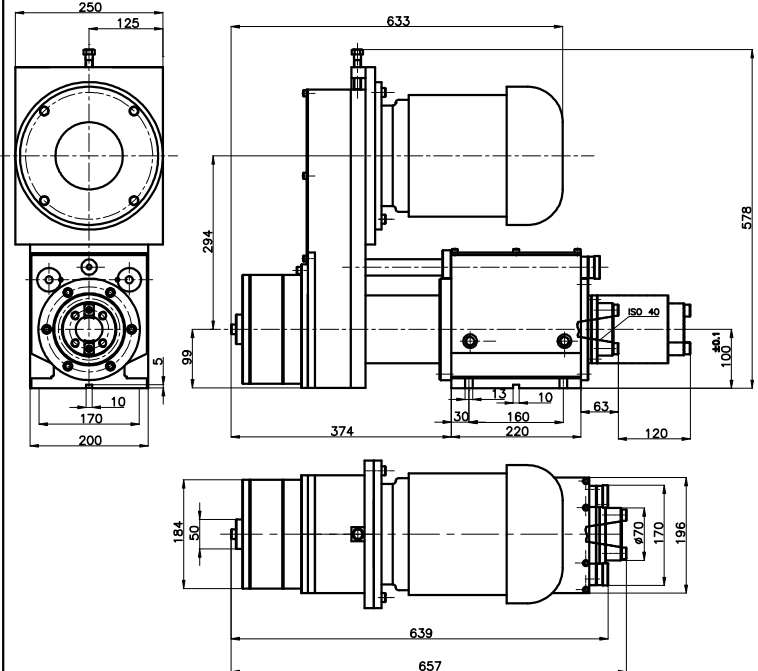
PUSF SERIES SELF FEED UNITS

PUSF P12



Specifications :	
Max. stroke	80 mm
Max. drilling capacity in Steel C - 40	12 mm
Max. thread capacity in steel C - 40	-
End stop tolerance 0.02	(Mechanical stop& proximity)
Run - out in spindle cone	< 0.01 mm
Tool adaptor	COLLET ER 25/ DIN28
Max. pressure	7 BAR
Axial thrust at 6 Bar (efficiency 0.8)	120 kgf
Piston area	25.6 cm ²
Max. air consumption per cycle	0.3 liters
Power	0.75 KW
motor frame size	80
Max. torque at spindle	1.25 kgm
Spindle speed at const power	560-9600 rpm
Transmission	Timing belts / poly - V belts
Weight with standard motor	

PUSF H40



Specifications :	
Max. cyl movement	125 mm
Max. drilling capacity in Steel C - 40	30 mm
Max. thread capacity in steel C - 40	M 24
End stop tolerance 0.02	(Mechanical stop)
Run - out in spindle cone	< 0.01 mm
Spindle cone \ Nose	ISO 40
Max. pressure	70 BAR
Axial thrust at 50 Bar (efficiency 0.8)	680 kgf
Piston area	16.5 cm ²
Max. oil consumption per cycle	0.425 liters
Max. rapid speed at 50 BAR	5 m / min
Power max.	3.7 KW
maximum motor frame size	112
Max. torque range	20 kgm
Spindle speed range	400 / 600 - 7000 rpm
Transmission	Timing belts / poly - V belts
Weight with standard motor	105 kgs

- ⇒ Central axial force
- ⇒ High precision
- ⇒ Exchangable belt and pulleys
- ⇒ Optional motor size - front and rear side of pulley box
- ⇒ Built -in switches